

## 1 Flush with Heparin (2000µ/mL)

60mL Aspirate	120mL Aspirate
60mL Syringe	2-60mL Syringes
2-30mL Syringes	4-30mL Syringes
Aspirate Needle	2-Aspirate Needles

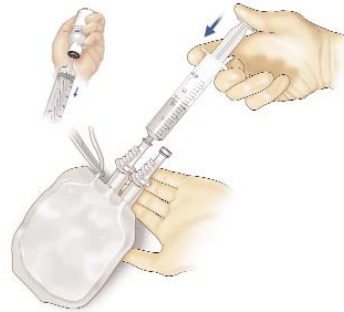
1



## 2 Add ACD-A Solution to Blood Bag

Spike Bag. Add 4mL of ACD-A for each 60mL of BMA.

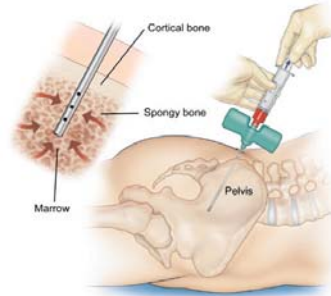
2



## 3 Surgeon aspirates 60mL or 120mL bone marrow.

*Note: Re-flush aspirate needle with Heparin if removed from iliac crest*

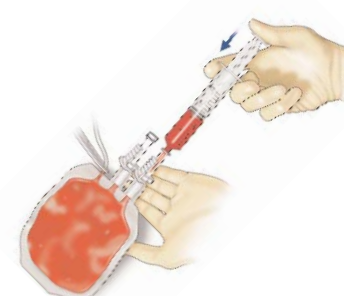
3



## 4 Inject into blood bag

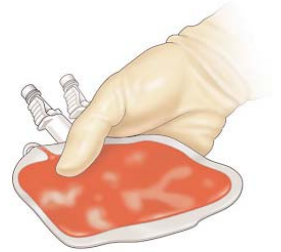
Once aspirate is injected into the blood bag, **MASSAGE THE BAG** Repeat with each syringe.

4



## 5 Pass Blood Bag, 60mL Transfer Syringe, and Cap to circulator or surgical technician to process BMA to BMAC.

5



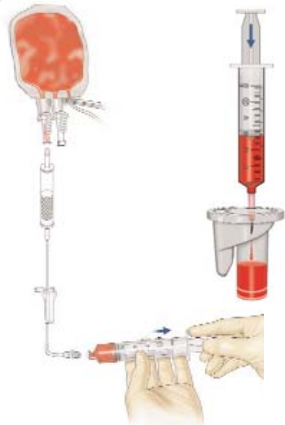
## Sterile Field

## 6 Filter BMA

Spike bag, filter BMA from blood bag. Transfer 60mL of BMA into blood chamber (**red port**) of process disposable (PD).

*Notes: Only 60mL of BMA per disposable.*

6



## 7 Load SmartPREP®

Place PD in machine, close the lid, press the green start button.

*NOTE: To prevent system imbalance use 60mL counterbalance when processing only one PD.*

7



## 8 Remove Plasma

After processing, use syringe with spacer and withdraw Plasma (**white port**) until air bubbles are present.

8



## 9 Resuspend BMAC

Using syringe without the spacer, resuspend bone marrow cells into the remaining plasma. Gently inject back and forth into chamber.

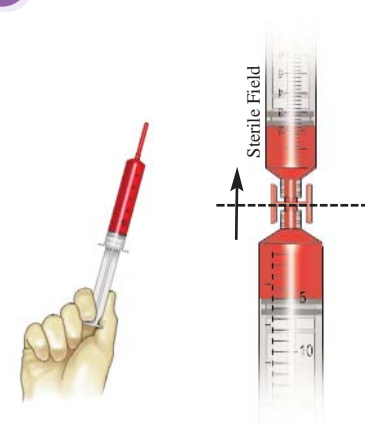
9



## 10 Transfer BMAC back into sterile field.

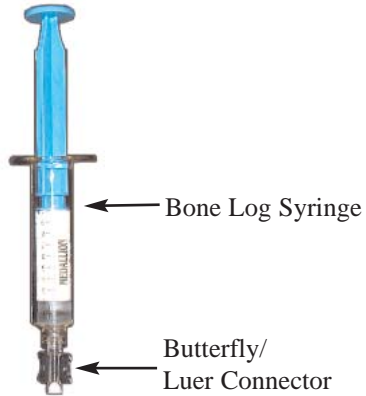
See backside for bone log process.

10



**Compress Bone Material into Graft/Bone log syringe from GDP-10 kit.**

1



**Mix BMAC activator solution.**

**Fill 1mL Syringe with 1.0 mL of solution**  
*Transfer to Sterile Field*

2



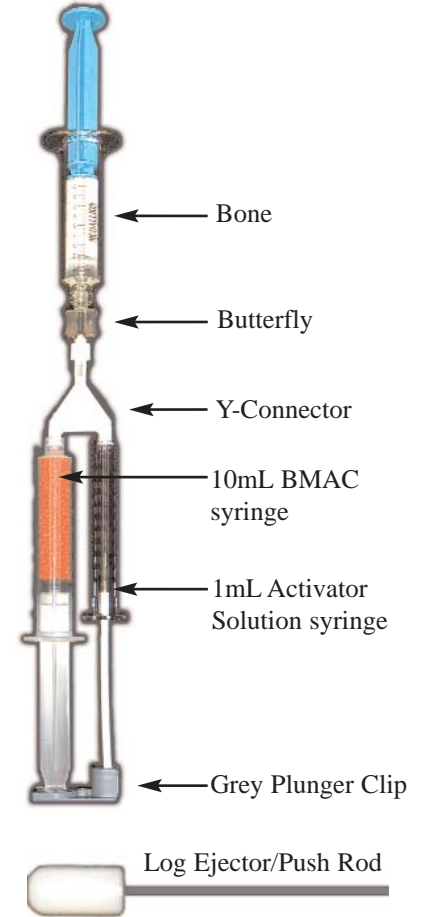
**Attach 1mL thrombin syringe & 10mL BMAC-filled syringe to Y-connector.**  
**Attach grey plunger clip.**

3



**Complete Log Set-Up**  
Attach Y-connector to butterfly end of graft/bone log syringe.

4



**Inject Fluids**

Place grey plunger clip on table and place one hand on Y-connector to support. In one continuous motion, press down until BMAC/Thrombin fill bone syringe and graft is completely hydrated.

5



**Disconnect bone log syringe from butterfly.**

**Let sit for 1-2 minutes.**

6



**Remove Bone Log from Syringe**

Remove blue plunger. Then push log from syringe with log ejector (push rod).

7

